

---

# 2013 APrIGF Seoul

---

## □ Overview

- Title : 2013 APrIGF Seoul
- Schedule : Wed, 4 September 2013 ~ Fri, 3 September 2013
- Venue : Ewha Woman's University
  - ※ Venue location may change
- Hosting Organisations : KIGA, ISOC-kr
- Co-hosting Organisations : KISA, APrIGF
- Supporting Organisations : KCC, Ewha Womans Univ.
  
- Size of the Event : Around 250 from 20 countries
  - ※ Foreign Participant(include Youth Camp) : around 80
- Daily Overview

	Pre-meeting	1st day	2nd day	3rd day
AM	○ Youth camp I	○ Opening Plenary - Welcome Remarks - Introduction and the Status of the IGF & the APrIGF : IGF or APrIGF - Keynote speech : KIGA	○ Plenary 2 (Issue 2) ○ 이슈2 관련 하위 Session 1, 2, 3	○ Plenary 4 (Issue 4) ○ 이슈4 관련 하위 Session 1, 2, 3
PM	○ APrIGF management committee & Secretariat pre-meeting ○ Youth camp II	○ Plenary 1 (Issue 1) ○ 이슈1 관련 하위 Session 1, 2, 3	○ Plenary 3 (Issue 3) ○ 이슈3 관련 하위 Session 1, 2, 3 ○ Youth camp ( III-closing)	○ Closing Plenary - The Way of collaboration in Bali and Forward - The next country of APrIGF

※ Post-conference Activity - Study tour (for candidate)

## □ Host Strategy

### ○ [Program Plan] Cooperation with IGF, APrIGF management committee(Secretariat)

- Gather the opinion to set up the topic and program of 2013 APrIGF Seoul

[reference] Main Topic of Prior Meeting

time	place	차수	main subjects
2010 June	Hong Kong	1st	- Increase of Internet Use and Participation on Internet Governance of Youth - Challenges and Solutions of Cyber-Security in Asia region - Challenges and Criticalness of an Open Internet Culture
2011 June	Singapore	2nd	- Intellectual property right, ACTA(Anti-Counterfeit Trade Agreement) - Cyber Security, Privacy and Data protection - Internet and International Law Enforcement
2012 July	Tokyo	3rd	- How ready is Asia for this Critical Resource? - IPv6 and the impact and opportunities for the region that may result for the transition to IPv6 - IDN policy for an Equitable and Diverse - The Arabic Revolutions, their Impact on the World, Roles of Social NETworks - ICANN and the New gTLDs - Risk management in the era of cloud computing

### ○ [Participation Encouragement] Encourage the participation of organizations and Internet business in Asia-Pacific region

- Provide the English, Japanese, Chinese translation to enlarge the participation from neighboring countries
- Promote with invitation letters, posters, e-mails, etc.

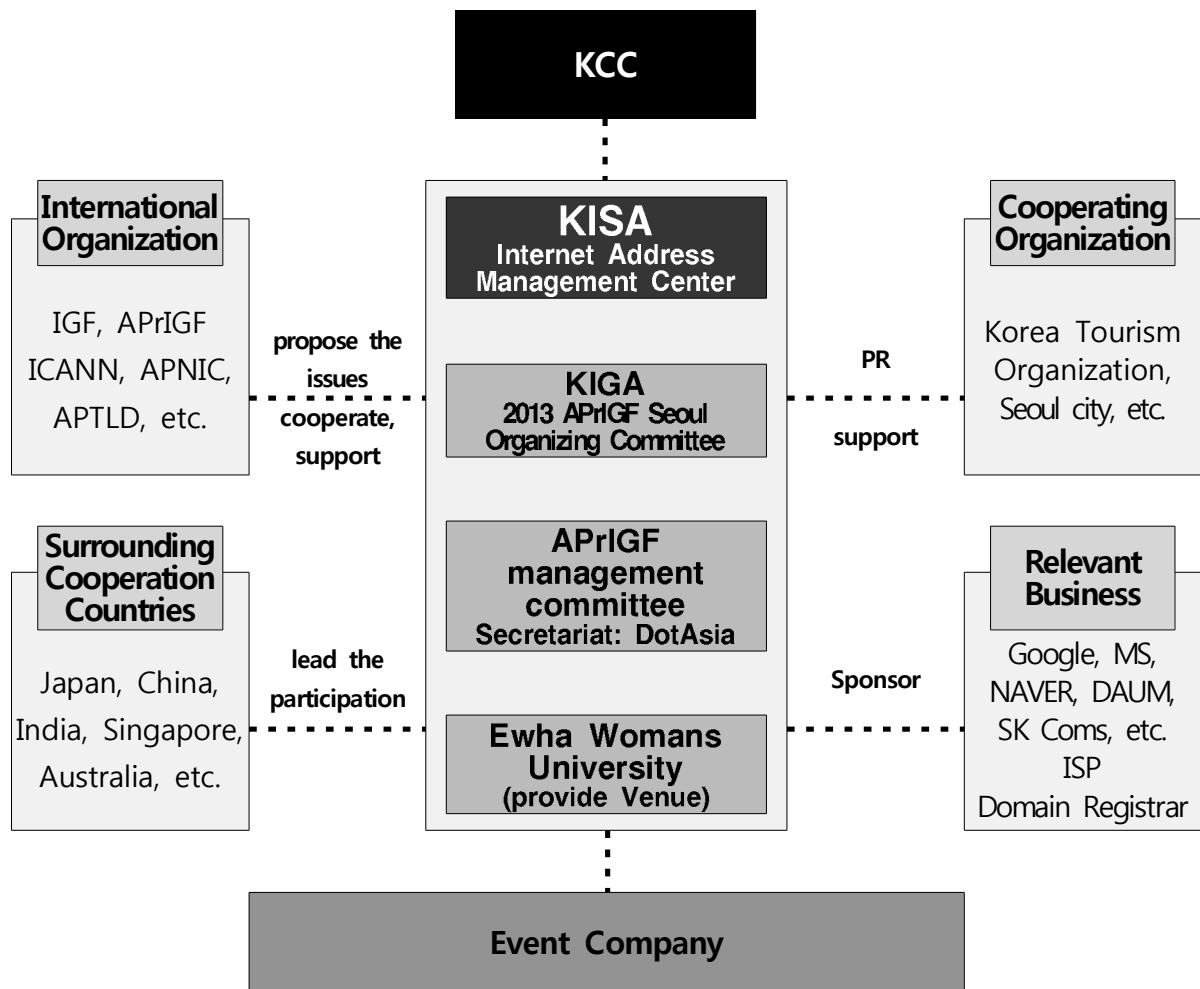
### ○ [Secure Budget] Cooperation and sponsorship with Internet governace organisations & ISPs in Asia-Pacific region

※ KISA(60,000,000 won), Sponsorship(60,000,000 won)

### ○ [PR and Venue Operation] Event company will take the Venue design, Advance PR, Venue guide

- Provide the program schedule and other informations by Homepage
    - ※ Provide the travel informations(visa, accomodation, transportation) for Foreign participant
  - Provide the English · Japanese · Chinese simultaneous interpretation
  - PR with invitation letter, poster, email, etc, Venue guide
- o **[Relevant Events] Lead the domestic Internet governance event during 2013 APrIGF Seoul and Carry the relevant events sponsored by relevant organizations & companies**
- Youth IGF: Univ. Students from Asia Pacific Region will discuss the Internet Governance issue and carry out the training
  - We will find sponsorship to cover PR, Souvenir, Luncheon, Dinner, etc.
  - Provide the Korea tour program for candidates after the APrIGF
    - ※ Show, city tour, museum, visit KISA, etc

## □ Business System



- ※ We need to expand the participation of domestic associations, civic organizations which relevant to Internet Governance issue(information protection, digital intellectual property right, freedom of expression, network neutrality, Internet laws, user protection, Internet address resources, etc.) : KSII(Korea Society for Internet Information), Internet Governance Open Research Society, Network Neutrality User Forum, CCKorea, etc.

# □ Schedule Plan

Classification		Jan	Feb	Mar	Apr	May	Jun	Jul	Aug	Sep
plan	basic planning (business system, place, date, time)	●	●							
	select the topic of 2013 APriGF Seoul			●						
	plan the program and make final agenda			●	●	●	●			
	liaise the speaker and debater					●	●	●		
	liaise the sponsor organizations			●	●	●	●	●		
PR	select the event company		●	●						
	decide the design of 2013 ARriGF Seoul				●	●				
	open&run the homepage (VISA, Accommdation, Transportation, etc.)				●	●	●			
	send the invitation letters and email						●	●		
	participant registration							●	●	
Main Event	make guideline for protocol and participant guide							●	●	
	select the interpreter and orientation								●	
	make and check the check-list of event								●	●
Youth Camp	PR					●	●	●		
	liaise the participant and proceed the registration						●	●	●	
	check the venue and accommodation						●	●		
the others	liaise the sponsor for event			●	●	●				
	make the plan for each event					●	●			
	proceed the each event									●



## □ Proposed 2013 APriGF Seoul Venue – Ewha womans Univ.

### o Conditions for using university site

- When the professor who belongs to Ewha womans univ. want to hold events in school, he can use all sites, buildings of Ewha.
  - ※ need an official document of professor  
(Prof. Byung-Won, Min → general affairs section of Ewha)
- Co-sponsor : KCC, Ewha womans univ.
- We can make reservation before 3 months for special event.  
(early February, as soon as school checks the official document)

### o Other issues

- School takes priority to students' right to learn
- It may difficult to secure the classrooms since the school starts on September 2.
  - ※ We can still use the classrooms if the acedemic affairs and professor approve.
- We can use guest house for Youth IGF in early September  
(for 70 students)

<p><b>Main Hall</b> (Opening &amp; Closing ceremony)</p>	<p>Posco hall(300person)</p>	<p>LG convention hall (400person)</p>
		
<p>place for Session</p> <ul style="list-style-type: none"> <li>- use classrooms in Posco hall</li> <li>- use ECC hall</li> </ul>	<p>ECC</p>	
	